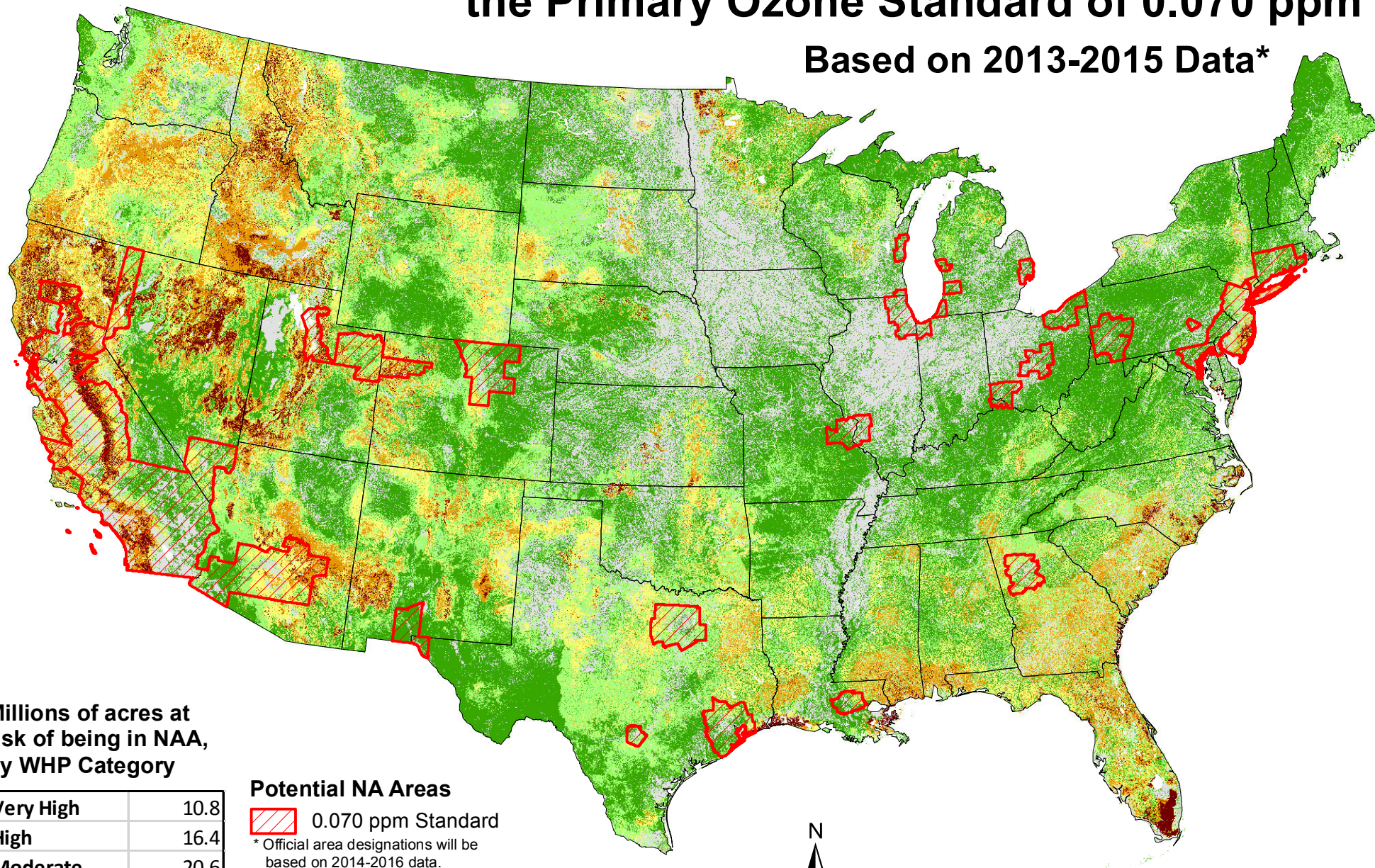


# Areas at Risk of Becoming Non-attainment Under the Primary Ozone Standard of 0.070 ppm


Based on 2013-2015 Data\*



Millions of acres at risk of being in NAA, by WHP Category

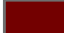





Very High	10.8
High	16.4
Moderate	20.6
Low	22.4
Very Low	40.4
Non-burnable	42.8
<b>Total</b>	<b>153.5</b>

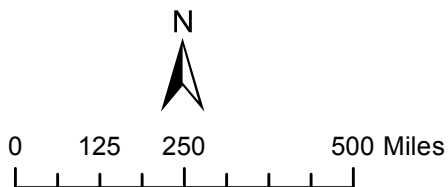
## Potential NA Areas

 0.070 ppm Standard

\* Official area designations will be based on 2014-2016 data.

## Wildfire Hazard Potential

 Very High	 Low
 High	 Very Low
 Moderate	 Non-burnable



Map compiled by the USDA Forest Service, Fire Modeling Institute. August 12, 2016.

Potential non-attainment areas were identified as MSAs and counties that exceeded the 0.070 ppm threshold using the three-year (2013-2015) average of the 4th highest 8-hour average for each monitoring site. Ozone data were provided by EPA staff. Wildfire Hazard Potential data are from the USDA Forest Service, Fire Modeling Institute ([www.firelab.org/project/wildfire-hazard-potential](http://www.firelab.org/project/wildfire-hazard-potential)).