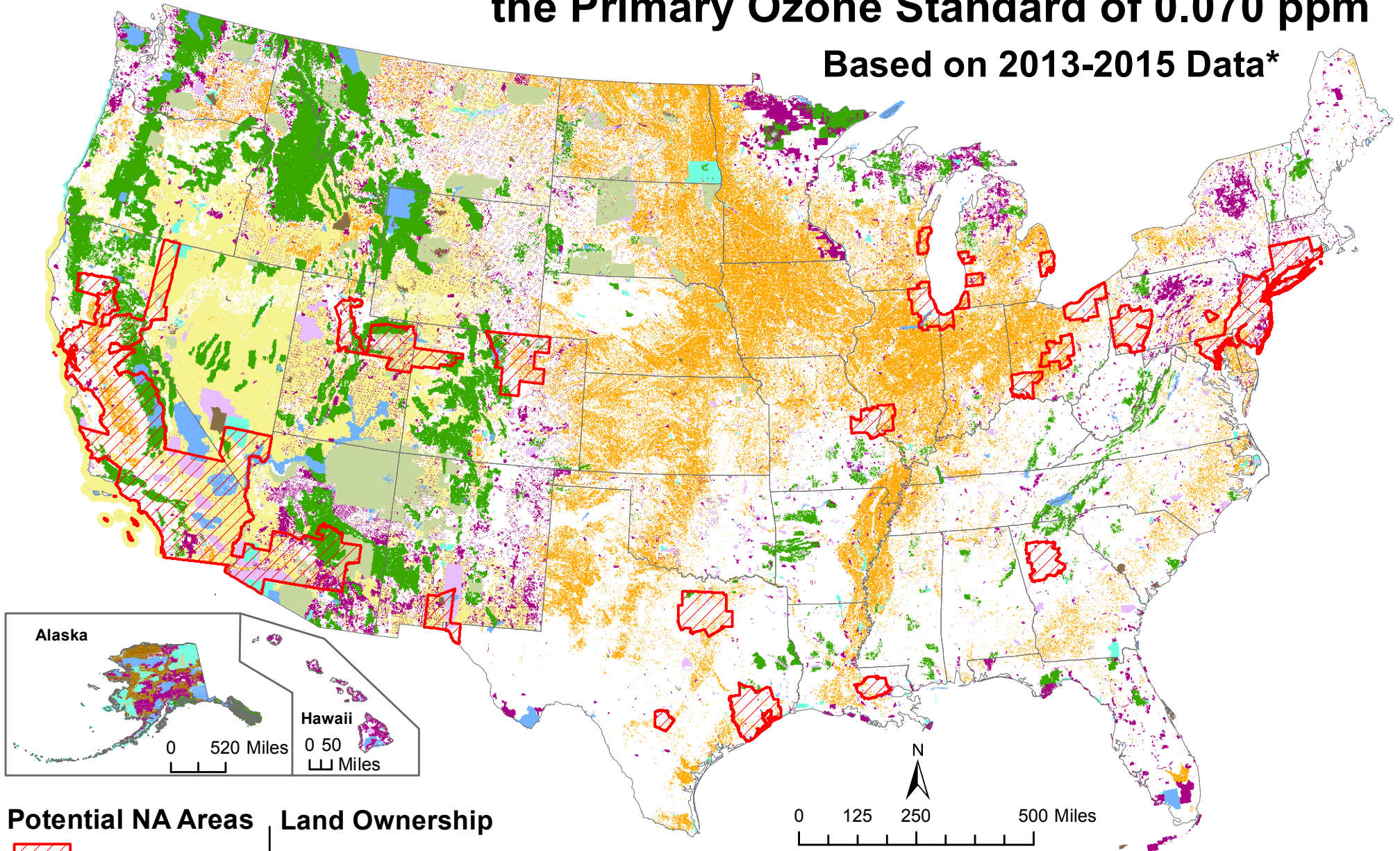


# Areas at Risk of Becoming Non-attainment Under the Primary Ozone Standard of 0.070 ppm

Based on 2013-2015 Data\*



## Potential NA Areas



0.070 ppm Standard

\* Official area designations will be based on 2014-2016 data.

## Land Ownership

(Millions of acres at risk of being in NAA)

BIA (3.9)	FS (13.4)	Other Federal (0.5)
BLM (23.1)	FWS (2.4)	State Lands (7.0)
DOD (6.6)	NPS (4.9)	Other (91.8)

Agriculture (7.7)

Potential non-attainment areas were identified as MSAs and counties that exceeded the 0.070 ppm threshold using the three-year (2013-2015) average of the 4th highest 8-hour average for each monitoring site. Ozone data were provided by EPA staff. Ownership data are from the USGS Protected Areas Database v1.3 and the USDA Forest Service Enterprise Data Warehouse. Land cover data (agriculture) are from LANDFIRE