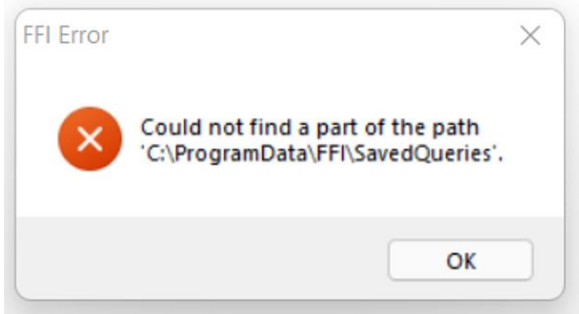


Resolution of the SavedQueries error

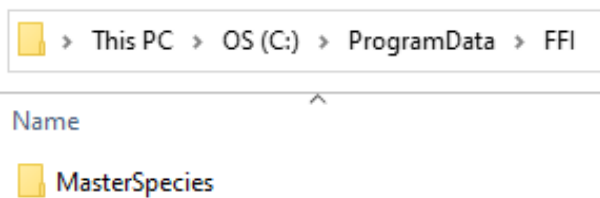
If you see this error:



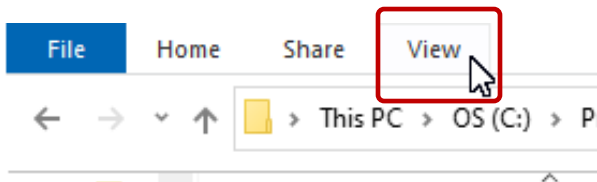
FFI-Lite has not created the *SavedQueries* folder automatically and you need to create it yourself.

Follow these steps to fix the error:

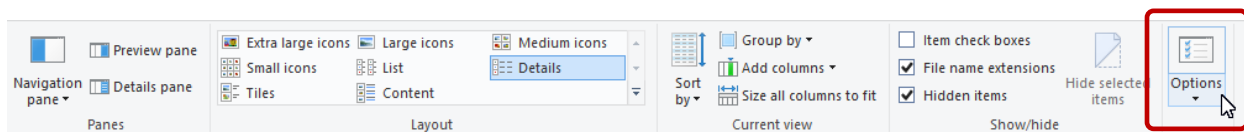
- 1) Open Windows File Explorer and try to navigate to **C:\ProgramData\FFI**. There should be a subfolder named *MasterSpecies* already in the folder. If the *ProgramData* folder is visible skip to step 6. If the folder is not visible, complete steps 2 – 5.



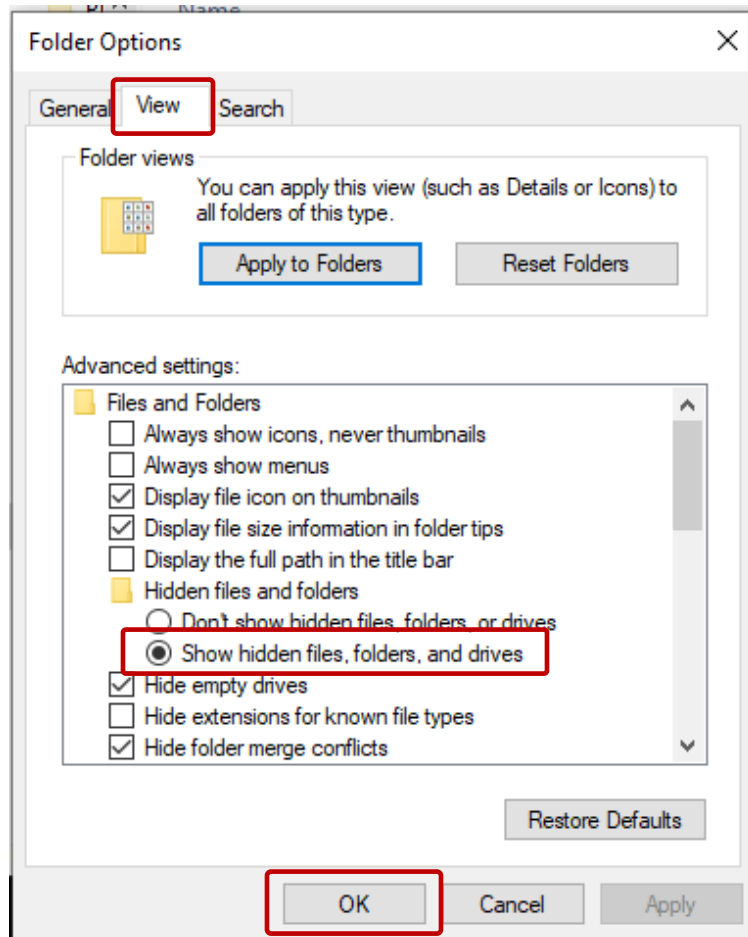
- 2) In File Explorer, click **View** at the top of the File Explorer window.



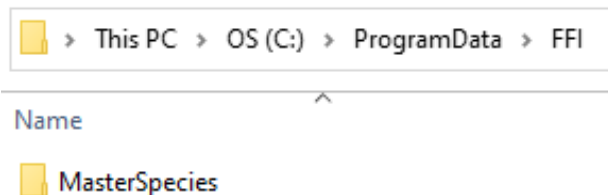
- 3) Click **Options**.



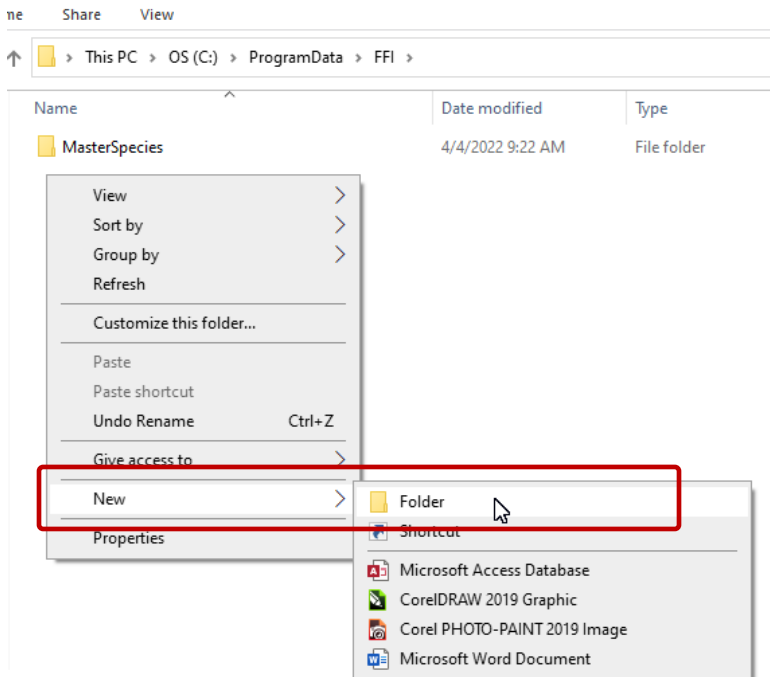
- 4) a) Click the **View** tab, b) highlight the radio button to **Show hidden files, folders and drives** and c) click **OK**.



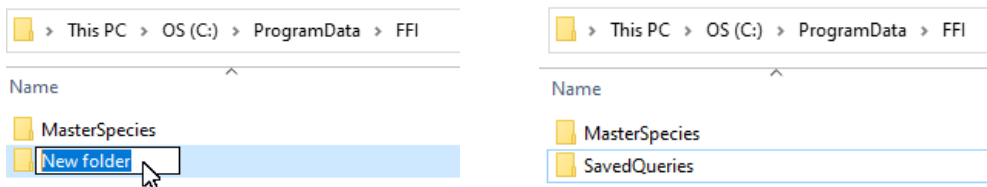
- 5) In File Explorer, navigate to **C:\ProgramData\FFI**



- 6) Right-click in the white area of the folder window and select **New>Folder**



- 7) Change the name of the folder from **New folder** to **SavedQueries**. Click the mouse cursor in the white area of the window and the folder name will be set.



- 8) Close **File Explorer**
- 9) Double click **FFI-Lite** icon to open the application and continue working. The *SavedQueries* error will not be displayed again.