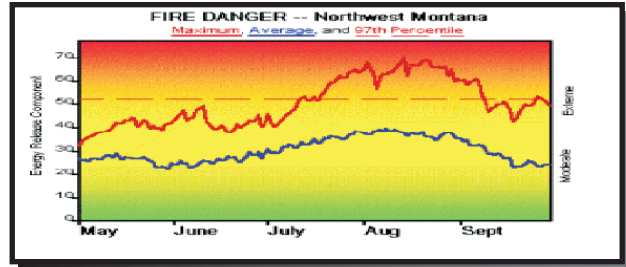


# FireFamily Plus

USDA-FS Fire Behavior Research,  
Fire and Aviation Management,  
Systems for Environmental Management

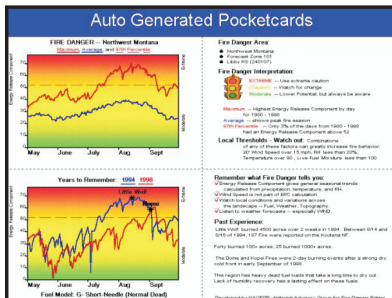
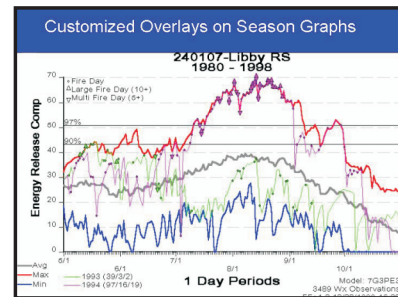


## What is it ?

*FireFamily Plus is software for analyzing and summarizing historical weather observations and computing fire danger indices of the National Fire Danger Rating System (NFDRS)*

## What type of information will you find ?

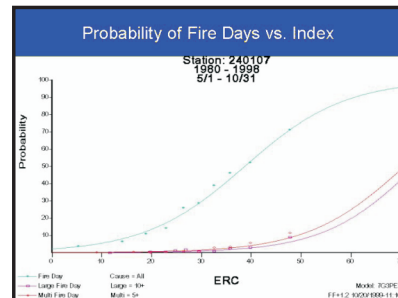
- ~ Weather/danger climatologies
- ~ NFDRS pocket cards
- ~ Weather event locator and percentile weather for RERAP
- ~ Season severity analysis tools
- ~ NFDRS decision points
- ~ "What-if" fire danger projections
- ~ NFDRS calculator



Class Definition	Low	Moderate	High	Extreme	Wind Direction(s)				
Percentile	0	15	16	50	57	90	100	NW	SE
Percent in Class	15	75	7	3					
Median Class	0	4	4	7	11	11	11	5V	SE
Observation	12	29	9	3					

Averages and Calculated SCS ERC	Low	Moderate	High	Extreme
1-Hr PM	21.9	9.6	8.2	15.0
10-Hr PM	40.6	19.0	17.2	15.3
100-Hr PM	23.0	11.3	14.8	17.9
Hour PM	152.4	120.7	91.1	172.6
Wood PM	160.5	143.0	126.3	117.1
20 Wind	7.9	3.7	3.3	11.3
1000-hr PM	25.6	13.1	17.7	18.3
Calculated SC	0	4	7	11
Calculated ERC	6	21	25	24



## How can it help you ?

*FireFamily Plus makes the tedious part of your job fast and easy-- leaving you more time and confidence in your analyst role*

## Interested ?

F&AM National Systems Support Group, Boise, ID  
(800-253-5559) (fire?/wo\_nifc@fs.fed.us)

Program development is continuing. The latest version and user guide are available online: <http://www.fs.fed.us/fire/planning/nist/distribu.htm>

