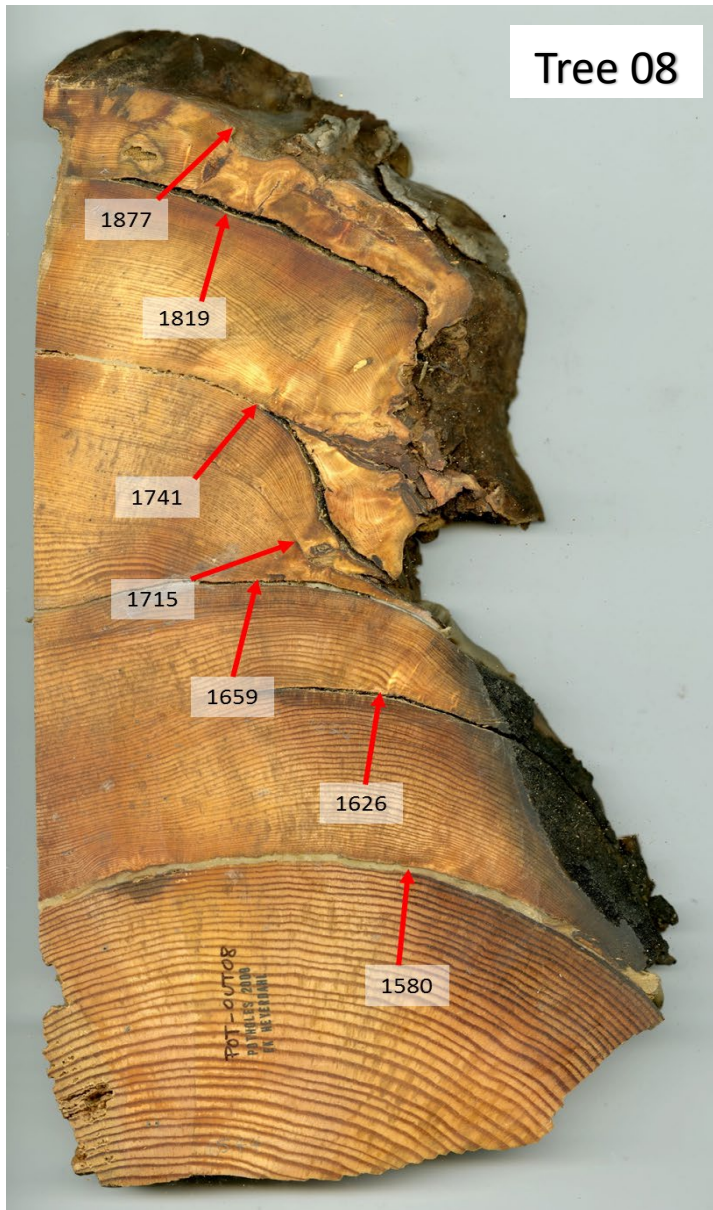


## Answer key to Handout M19 & H18-1. A Tree's Story



Tree 08

Here is a photo of a tree cookie from a forest in central Oregon. Each fire scar is marked with a red arrow and the year when the fire occurred.

1. In the table below, under "Fire year," write the date of every fire scar on the cookie. Write the dates in order, from most recent to oldest.

Fire year	Fire interval (years)
1877	
1819	58
1741	78
1715	26
1659	56
1626	33
1580	46

2. How many years occurred between each pair of fires? Record your answers above under "Fire interval."
3. What is the longest fire interval? 78 years
4. What is the shortest fire interval? 26 years
5. What is the average fire interval? 49.5 year