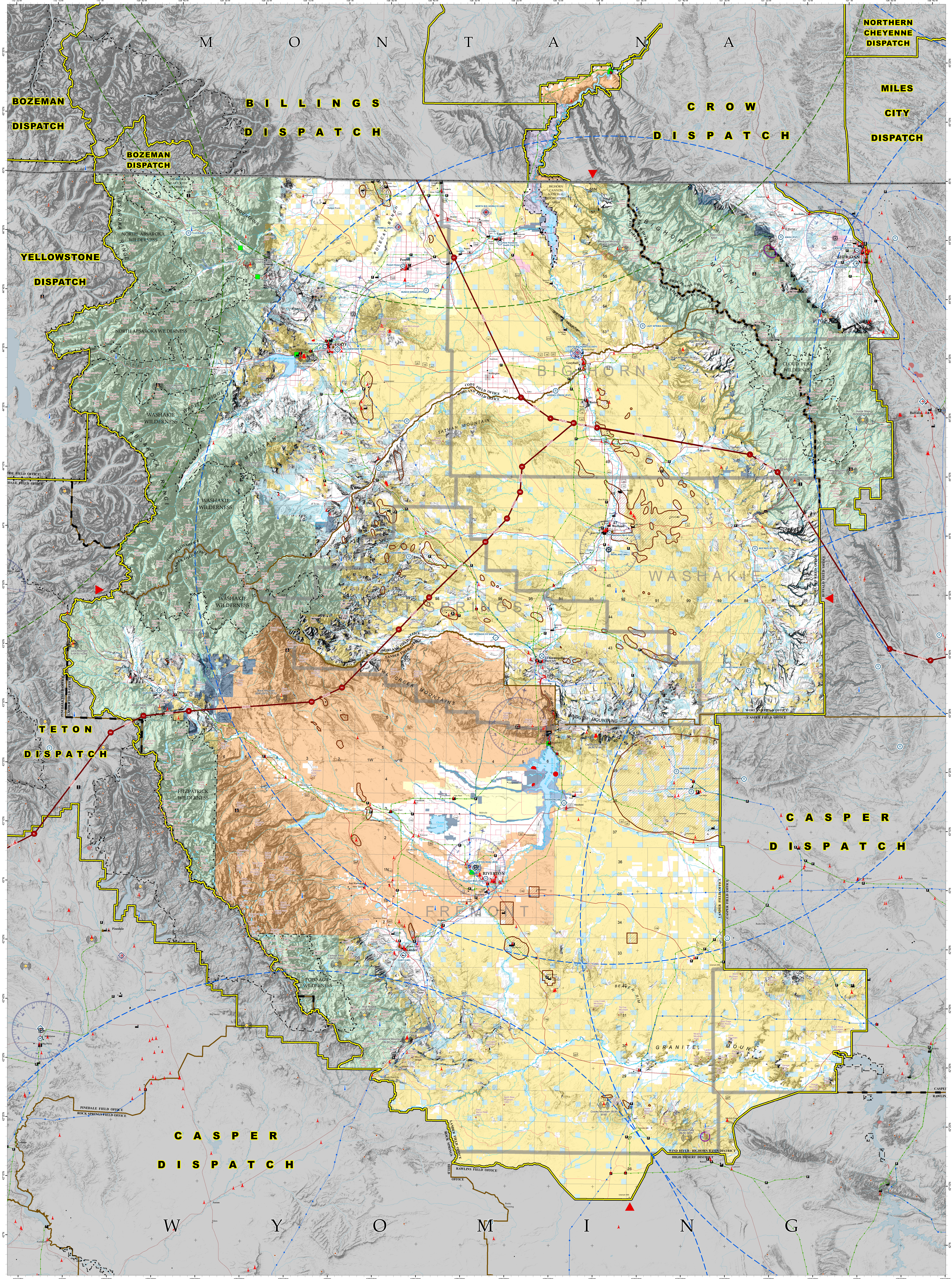


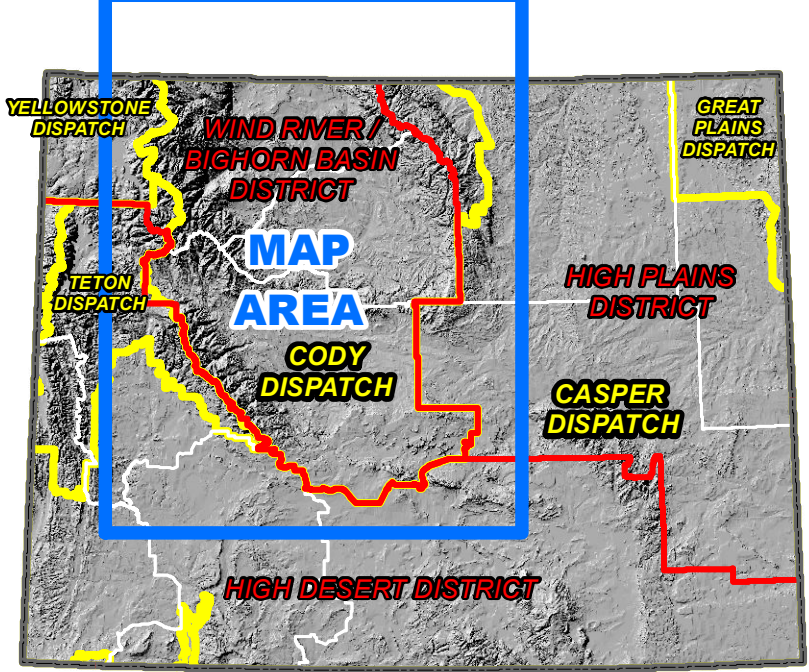
**CODY INTERAGENCY  
DISPATCH ZONE  
AVIATION  
HAZARDS  
2023**

UNITED STATES DEPARTMENT OF THE INTERIOR  
BUREAU OF LAND MANAGEMENT



- Aviation Hazards**
- Communication Obstruction (Generally 175 AGL)
  - Electrical Substation
  - Industrial Structure
  - Lookout/Obstruction Tower
  - Metereological (MET) Tower
  - Non-Standard Weather Station (NWS)
  - Significant Summit/Peak
  - Spinning Powerlines
  - Tall Buildings or Structures
  - Tank/Storage Water Towers
  - Wind Turbine
  - Wind-Propagating Obstruction Boundary
  - Transmission Line (175 KV)
  - Transmission Line (230 KV)
  - Transmission Line (345 KV)
  - Transmission Line (500 KV)
  - Helicopter Buffers (HCB) Areas
- Aviation Operations**
- Public Airport/Landing Strip
  - Public & Military Use Airport
  - Military Airport
  - Private Airport/Landing Strip
  - Unimproved Airstrip
  - Helipad/Heliport
  - Single Engine Air Tanker (SEAT) Base
  - TB National Air Tanker (NAT) Base Buffer
  - Very Large Air Tanker (VLAT) Base
  - TB National Air Tanker (NAT) Base Buffer
  - Non-Directional Radio Beacon (NDR)
  - WLF Class Range (WLF)
  - WLF - COM
  - WLF - COM
  - Radio Receiver Location
  - Areas Subject to 2000' Minimum Altitude AGL Minimum: 2000' Minimum Altitude AGL
  - Aquatic Invasive Species Presence
  - Military Training Route
  - Special Use Airspace - Low Altitude

- Base Data and Map Elements**
- State Capital
  - County Seat
  - Other City or Town
  - BLM Office Location
  - Interstate Highway
  - Secondary Highway (Federal or State)
  - Collection Light Duty Road
  - Road
  - Highway State Boundary
  - Other State Boundary
  - County Boundary
  - Dispatch Zone Boundary
  - BLM District Boundary
  - BLM Field Office Boundary
  - Military Reservation Boundary
  - Municipal Areas
- Surface Management Status**
- Federal Public Lands (Administered by BLM)
  - Federal Public Lands Wilderness Study Areas (Administered by BLM)
  - National Forest (Administered by USFS)
  - National Forest Wilderness Study Areas (Administered by USFS)
  - National Forest Wilderness (Administered by USFS)
  - National Public Lands Management Area (Administered by USFS)
  - National Parks and Monuments (Administered by NPS)
  - Military Reservations/Camp of Engineers (Administered by DOD)
  - Reserve of Production Lands (Administered by BLM)
  - Other Federal Lands (Administered by Host Agency)
  - Indian Reservations/Tribal Lands
  - State Lands
  - State Wildlife/Refuge Areas (Administered by State Agency)
  - Local Government Lands
  - Private Lands



This map shows Surface Management Status to the extent the scale permits. Areas of less than 40 acres may not appear on this map. Please consult authoritative data sources for any fine scale uses.

No warranty is made by the Bureau of Land Management as to the accuracy, reliability, or completeness of these data for individual or aggregate use with other data. The user assumes the entire risk associated with the use of these data and bears all responsibility in determining whether these data are fit for their intended purpose.

Map produced by: Robert Mathis, BLM/WY03, 4/21/2023