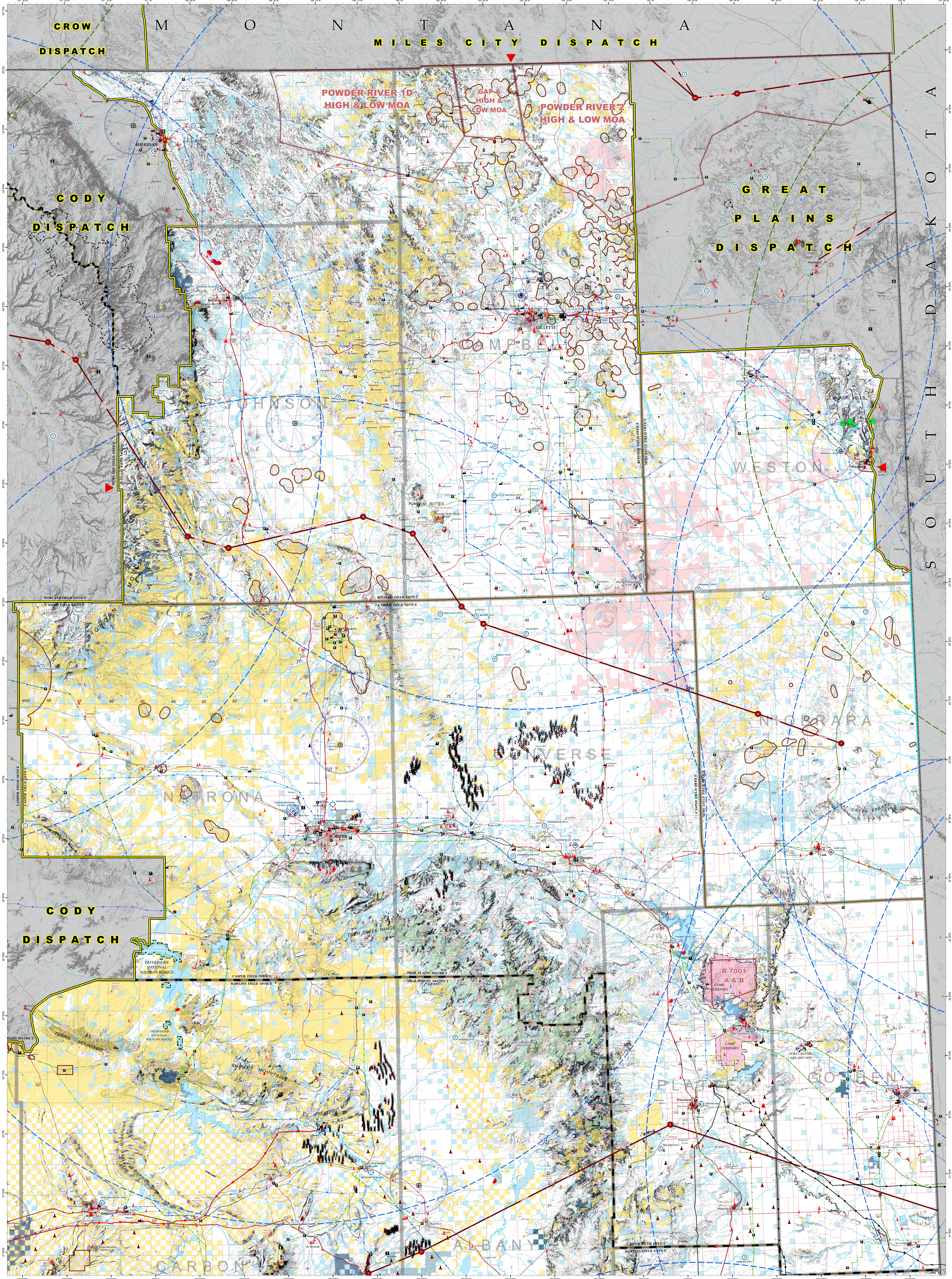
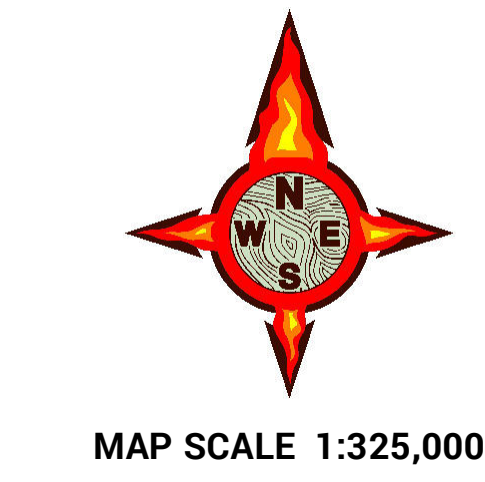
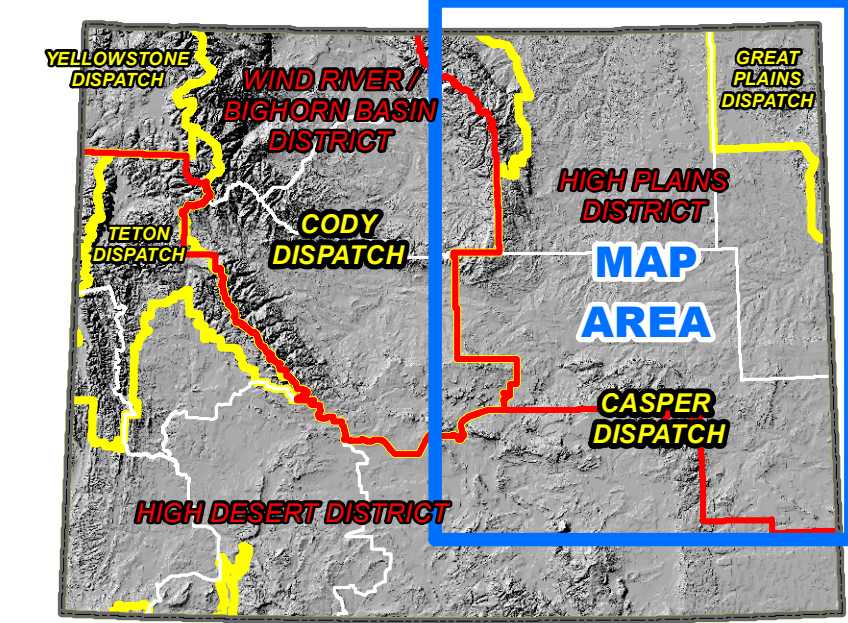


**CASPER INTERAGENCY
DISPATCH ZONE (N)
AVIATION
HAZARDS
2023**

UNITED STATES DEPARTMENT OF THE INTERIOR
BUREAU OF LAND MANAGEMENT



- Aviation Hazards**
- ▲ Communication Tower/Towers/Antennas (Elevations 75-100)
 - Electrical Substation
 - Industrial Structure
 - Lookout/Observation Tower
 - Meteorological SNET Tower
 - Remote Automatic Weather Station (RAWS)
 - Significant Ground-Pole
 - Spawning Penstock
 - Tall Buildings or Structures
 - Tank/Storage/Water Towers
 - Wind Turbine
 - Power/Gas/Liquid/Gas/High Voltage Area Boundary
 - Transmission Line (115 kV)
 - Transmission Line (230 kV)
 - Transmission Line (345 kV)
 - Transmission Line (500 kV)
 - Hydrogen Sulfide (H₂S) Areas
- Aviation Operations**
- Public Airport/Landing Strip
 - Public & Military Use Airport
 - Military Airport
 - Private Airport/Landing Strip
 - Airport/Landing Strip (Unimproved Status)
 - Abandoned Airport
 - Helipad/Heliport
 - Single Engine Air Tanker (SEAT) Base
 - 70 Nautical Mile (NM) VLOS Base Buffer
 - Very Large Air Tanker (VLAT) Base
 - 70 Nautical Mile (NM) VLOS Base Buffer
 - Non-Directional Radio Beacon (NDB)
 - VOR/DME (VOR)
 - VORTAC
 - Radio Beacon Location
 - Area Subject to 200' Minimum Altitude ADZ (Minimum: 200' MSL/AGL, MDA, MVA)
 - Aquatic Invasive Species Presence
 - Military Training Route
 - Special Use Airspace - Low Altitude
- Base Data and Map Elements**
- State Capital
 - County Seat
 - Other City or Town
 - BLM Office Location
 - Interstate Highway
 - Secondary Highway (Federal or State)
 - Collector/Local Road
 - Railroad
 - Interstate State Boundary
 - Other State Boundary
 - County Boundary
 - Unimproved Land Boundary
 - BLM District Boundary
 - BLM Field Office Boundary
 - Military Reservation Boundary
 - Municipal Area
- Surface Management Status**
- Federal Public Lands (Administered by BLM)
 - Federal Public Lands Wilderness Study Areas (Administered by BLM)
 - National Forest (Administered by USFS)
 - National Wildlife Refuge or Management Area (Administered by USFS)
 - National Park and Monument (Administered by NPS)
 - Military Reservation/Department of Defense (Administered by DOD)
 - Bureau of Reclamation Lands (Administered by BUREAU OF RECLAMATION)
 - Backstop Areas Acquired Federal Lands (Administered by Acquiring Agency)
 - Other Federal Lands (Administered by Host Agency)
 - State Lands
 - State Wildlife/Recreation Area (Administered by State Agency)
 - Local Government Lands
 - Private Lands



North Arrow
Map Scale 1:325,000
Lambert Conformal Conic Projection based on standard parallels 41 degrees and 45 degrees

This map shows Surface Management Status to the extent the scale permits. Areas of less than 40 acres may not appear on this map. Please consult additional data sources for any finer scale uses. No warranty is made by the Bureau of Land Management as to the accuracy, reliability, or completeness of these data for individual or aggregate use with other data. The user assumes the entire risk associated with the use of these data and bears all responsibility in determining whether these data are fit for the user's intended purpose. Map produced by: Robert Mathis, BLM/WYSD, 4/21/2022