

# Rio Grande National Forest Aviation Hazard Map

- Repeater
- HATZ- BLM Sites
- HATZ- USFS Sites
- Powerlines
- Hazard Lines
- Rio Grande National Forest Admin Boundary
- PSICC Admin Boundary
- Military Training Areas
- High, gusting winds
- Towers and wires
- Aerial Retardant Avoidance Areas
- Sensitive and Threatened

## DENVER LEGEND

**AIRPORTS**

Other than non-surfaced runways: Runway Name, Elevation, Length, Width, Surface, etc.

**ADDITIONAL INFORMATION**

Obstruction: MSL, AGL, etc.

**AIRPORT TRAFFIC SERVICE AND AIRSPACE INFORMATION**

**COMMUNICATION BOXES**

**RADIO AIDS TO NAVIGATION**

**OBSTRUCTIONS**

**MISCELLANEOUS**

**TOPOGRAPHIC INFORMATION**

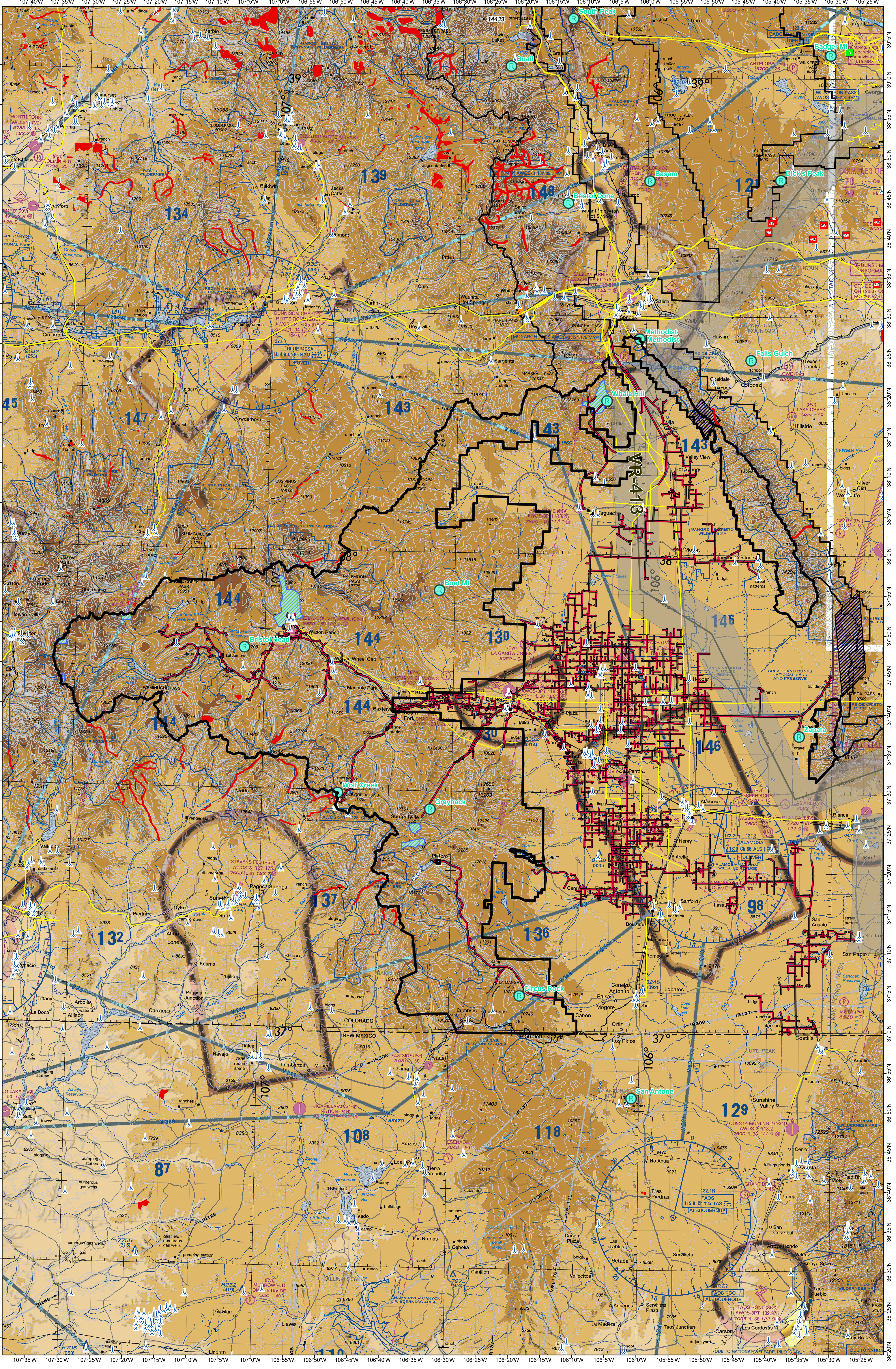
## DENVER SECTIONAL AERONAUTICAL CHART SCALE 1:500,000

EFFECTIVE 0901Z 21 MAR 2024 TO 0901Z 16 MAY 2024

Consult NOTAMS for latest information. Consult/Subscribe to FAA Safety Alerts and Charting Notices at [http://www.faa.gov/air\\_traffic/flight\\_info/aeronav/digital\\_products/vfr/](http://www.faa.gov/air_traffic/flight_info/aeronav/digital_products/vfr/)

**CONTROL TOWER FREQUENCIES ON DENVER SECTIONAL CHART**

CONTROL TOWER	OPERATES	TOWER	END CON	ATIS	ASB/PAR
BOULDER COUNTY	0900-2000	118.200	118.200	118.200	118.200
FOUR CORNERS	0900-2000	118.200	118.200	118.200	118.200
GRAND JUNCTION	0900-2000	118.200	118.200	118.200	118.200
LA VEGA	0900-2000	118.200	118.200	118.200	118.200
LA VEGA (2nd)	0900-2000	118.200	118.200	118.200	118.200
LA VEGA (3rd)	0900-2000	118.200	118.200	118.200	118.200
LA VEGA (4th)	0900-2000	118.200	118.200	118.200	118.200
LA VEGA (5th)	0900-2000	118.200	118.200	118.200	118.200
LA VEGA (6th)	0900-2000	118.200	118.200	118.200	118.200
LA VEGA (7th)	0900-2000	118.200	118.200	118.200	118.200
LA VEGA (8th)	0900-2000	118.200	118.200	118.200	118.200
LA VEGA (9th)	0900-2000	118.200	118.200	118.200	118.200
LA VEGA (10th)	0900-2000	118.200	118.200	118.200	118.200
LA VEGA (11th)	0900-2000	118.200	118.200	118.200	118.200
LA VEGA (12th)	0900-2000	118.200	118.200	118.200	118.200
LA VEGA (13th)	0900-2000	118.200	118.200	118.200	118.200
LA VEGA (14th)	0900-2000	118.200	118.200	118.200	118.200
LA VEGA (15th)	0900-2000	118.200	118.200	118.200	118.200
LA VEGA (16th)	0900-2000	118.200	118.200	118.200	118.200
LA VEGA (17th)	0900-2000	118.200	118.200	118.200	118.200
LA VEGA (18th)	0900-2000	118.200	118.200	118.200	118.200
LA VEGA (19th)	0900-2000	118.200	118.200	118.200	118.200
LA VEGA (20th)	0900-2000	118.200	118.200	118.200	118.200



This map has been reviewed by:

Data Sources: Visual Flight Rules (VFR) Charts were downloaded from: [http://www.faa.gov/air\\_traffic/flight\\_info/aeronav/digital\\_products/vfr/](http://www.faa.gov/air_traffic/flight_info/aeronav/digital_products/vfr/)

Locally identified vertical obstructions and/or administrative features were obtained from agency SDE servers and data storage

HIGHEST TERRAIN elevation is 14433 feet located at 07° 07' N 107° 27' W

Spot elevation:  $\pm 4254$

Approximate elevation:  $\pm 2000$

This map was produced by the Pike and San Isabel National Forests and Cimarron and Comanche National Grasslands (PSICC). GIS data and product accuracy may vary. This map is not to be used for navigational purposes. It is only to be used as a supplemental means of identifying vertical obstructions and other known hazards. The PSICC reserves the right to update, modify, or replace any or all of this data without notifying users. For more information contact: The PSICC Supervisors Office at 719-553-1400.

Note to Pilots and Cooperating Agencies: Not all aerial wires, cableways, and obstructions that could be hazardous to aircraft are shown on this map. Please use extreme caution when flying in unfamiliar areas.

**SPECIAL USE AIRSPACE ON DENVER SECTIONAL CHART**

Class B, Class C, TRSA, and Selected Approach Control Frequencies

NUMBER	ALTITUDE	TIME OF USE	CONTACT FACILITY	FREQUENCIES
B-001 A	12000 TO BUFT INCL 12000	0700-2000	DENVER CNTR	128.375 379.95
B-001 B	12000 TO BUFT INCL 12000	0700-2000	DENVER CNTR	128.375 379.95
B-002	12000 TO BUFT INCL 12000	0700-2000	DENVER CNTR	128.375 379.95
B-003	12000 TO BUFT INCL 12000	0700-2000	DENVER CNTR	128.375 379.95
B-004	12000 TO BUFT INCL 12000	0700-2000	DENVER CNTR	128.375 379.95
B-005	12000 TO BUFT INCL 12000	0700-2000	DENVER CNTR	128.375 379.95
B-006	12000 TO BUFT INCL 12000	0700-2000	DENVER CNTR	128.375 379.95
B-007	12000 TO BUFT INCL 12000	0700-2000	DENVER CNTR	128.375 379.95
B-008	12000 TO BUFT INCL 12000	0700-2000	DENVER CNTR	128.375 379.95
B-009	12000 TO BUFT INCL 12000	0700-2000	DENVER CNTR	128.375 379.95
B-010	12000 TO BUFT INCL 12000	0700-2000	DENVER CNTR	128.375 379.95
B-011	12000 TO BUFT INCL 12000	0700-2000	DENVER CNTR	128.375 379.95
B-012	12000 TO BUFT INCL 12000	0700-2000	DENVER CNTR	128.375 379.95
B-013	12000 TO BUFT INCL 12000	0700-2000	DENVER CNTR	128.375 379.95
B-014	12000 TO BUFT INCL 12000	0700-2000	DENVER CNTR	128.375 379.95
B-015	12000 TO BUFT INCL 12000	0700-2000	DENVER CNTR	128.375 379.95
B-016	12000 TO BUFT INCL 12000	0700-2000	DENVER CNTR	128.375 379.95
B-017	12000 TO BUFT INCL 12000	0700-2000	DENVER CNTR	128.375 379.95
B-018	12000 TO BUFT INCL 12000	0700-2000	DENVER CNTR	128.375 379.95
B-019	12000 TO BUFT INCL 12000	0700-2000	DENVER CNTR	128.375 379.95
B-020	12000 TO BUFT INCL 12000	0700-2000	DENVER CNTR	128.375 379.95