

Fuels and Fire Behavior Digital Dictionary

The Fire Behavior Assessment Team

Clover Fire
Plot 1

6/18/2008
Region5/Sequoia NF



Plot1 1, Pre



Plot 1, Post

Fuels, Topography, Weather

Site Info	
Veg Type	Mixed con, mountain mahogany understory
Slope (%)	15
Aspect (deg)	324
Elev (ft)	8,084

Climatic Variables	
Fire Arrival (Date, Time)	6/18/08, 13:17
Burn End (Date, Time)	6/18/08, 16:00
20ft Wind (mph), 10min avg./gusts	5/19
Onsite wind(mph), eyelevel (10min avg.)	n/a
Wind direction (azimuth)	290
RH (%)	6
Temp (F)	79
ERC/BI	51/40
Drought Index	n/a
Live FM% (Herb/Woody)	66/91
Dead FM% (1/10/100/1000hr)	4/9/10/12

Fuel Model (low/high)	
185/142	
Surface Fuels - Pre	Tons/ac
1-hour	0.3
10-hour	4.4
100-hour	0
1000-hour	0
Litter	4.4
Duff	11.6
Total Fuels	20.7

Understory Veg.	Tons/ac
Live/Dead Shrub	14.33 / 17.92
Live/Dead Herbaceous	0

Canopy & Stand	
Canopy Bulk Density (kg/m ³)	0.071
Canopy Base Height (ft)	1
Basal Area (ft ² /ac)	65
Overstory Trees/ac	377

Climatic Variable Details

Weather and fuel moistures taken from the Blackrock RAWs using NFDRS2016. ERC and BI are scores not percentiles.

Site History:

Fire Behavior

Fire Behavior	
Primary Fire Type	Surface, mod Intensity, uphill, against wind
Secondary Fire Type	Single torching
ROS - sensor source (ch/hr) (min/max/avg.)	0.5 / 3.7 / 2.1
ROS - video interp. (ch/hr) (min/max/avg.)	0.5 / 2 / 0.6
Flame Length (ft) (min/max/avg)	1/9/3
Direction fire spread is going. (azimuth)	290

Fire Video	Description
	n/a

Fire management actions affecting plot:
The Clover Fire was a Wildland Fire Use Fire (Resource Benefit Fire).

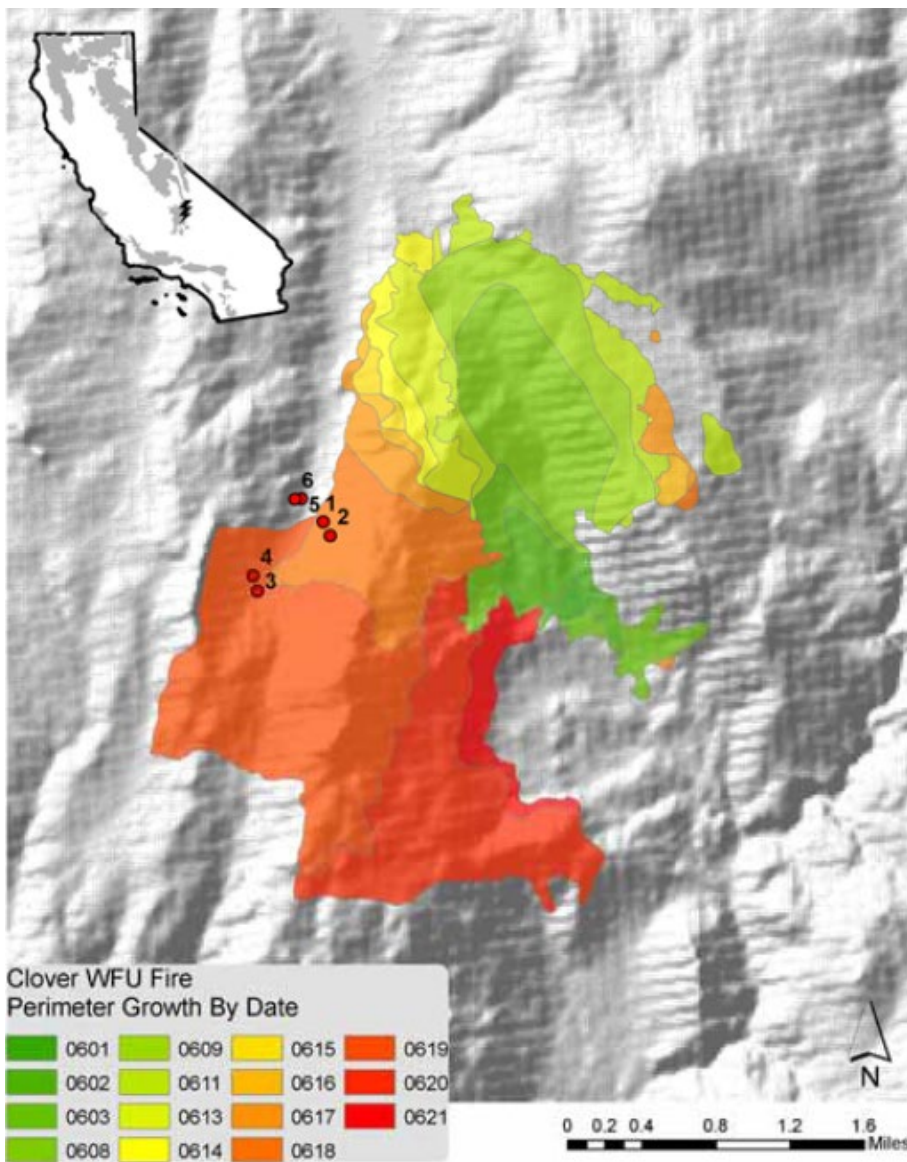


Fire Effects

Fire Severity	
Substrate Score (1-5)	4.75
Understory Veg Score (1-5)	No data
Avg. % tree canopy scorch	33
Avg. % tree canopy torch	35
Avg. tree bole char (ft)	No data

Severity category definitions: 1= unburned, 2=low, 3=moderate, 4=high, 5=very high

Fuel Consumption	%
1-hour	100
10-hour	94
100-hour	0
1000-hour	0
Litter	100
Duff	100



Clover Fire, Plot1, 2008

About the Fire Behavior Assessment Team (FBAT)

Abstract

Despite the scope of the US wildfire problem, capabilities for monitoring active wildfires to answer pressing questions about fire behavior and personnel safety are severely limited. The **Fire Behavior Assessment Team (FBAT)** is the only team currently collecting [applied science data on active wildfires](#). FBAT functions in collaboration with land managers and interested research groups. In coordination with incident management, sites are placed opportunistically ahead of the fire accounting for current and expected fire behavior, safe access, and fire management tactics.

FBAT can collect standard weather, fire behavior and fire severity observations as well as set up dataloggers which store wind speed, direction, temperature and RH. FBAT can also take plot data which includes:

- Heat resistant fire behavior equipment left on-site (video camera, 5-foot anemometer, sensor array for rate of spread/temperature profile through time, heat flux sensor).
- Fuels data collected on canopy, surface and ground fuels before and after the fire, and fire severity assessment post-fire. Fuel moisture data is often collected prior to the fire.

More information about methods and data can be found on the FBAT website:

<https://www.frames.gov/fbat/home>

The report for this fire which includes field methods and other background can be found at:

https://www.fs.fed.us/adaptivemanagement/reports/fbat/Antelope_detail.pdf