

# **BehavePlus 6.0 Release Notice**

## **Contents**

BehavePlus 6.0 Release Notice .....	1
1. Introduction .....	1
2. System Requirements .....	2
4. Installation .....	2
4.1 Version 6 Installation.....	2
4.2 Upgrading from Versions 5 .....	3
4.3 Uninstalling .....	3
4.4 BehavePlus Installation Info.....	3
4.4.1 Program Information.....	3
4.4.2 Environment Variables .....	4
5. Support.....	4
5.1 U.S. Government National Support.....	4
5.2 Training Material .....	5
5.3 Features Guide.....	5
5.4 Variables Paper.....	5
5.5 FAQ's .....	5

## **1. Introduction**

The BehavePlus fire modeling system is a PC-based program that is a collection of models that describe fire and the fire environment. It is a flexible system that produces tables, graphs, and diagrams and can be used for a multitude of fire management applications. BehavePlus is the successor to the BEHAVE fire behavior prediction and fuel modeling system (Andrews 2013, Andrews 1986, Andrews and Chase 1989, Burgan and Rothermel 1984, Andrews and Bradshaw 1990). It is called the BehavePlus fire modeling system to reflect its expanded scope.

The BehavePlus program and supporting material are available on [www.frames.gov/behaveplus](http://www.frames.gov/behaveplus).

A description of changes from the old BEHAVE through each version of BehavePlus is available as a PDF on the Downloads page.

## 2. System Requirements

Operating System	Windows 10 ® Windows 7 ® Windows Vista ® Windows 2000 ®
Memory	128 Mb (64 Mb free)
Storage	50 Mb
Display	Minimum 1024 x 768 pixels, 264K (16-bit) colors
Help	Adobe ® Acrobat Reader is required to view the on- line PDF help files. To get the latest Acrobat Reader, click <a href="#">here</a> .
License	The license requires that a postcard depicting a scene of your local area be sent to: Systems for Environmental Management P.O. Box 8868 Missoula, MT 59801
Data Requirements	BehavePlus does not use data file input. All data are entered directly by the user.

## 3. Download

The BehavePlus program is available on the [www.frames.gov/behaveplus](http://www.frames.gov/behaveplus) **Software/Manuals** page. The Features Guide and Variables paper are available in the Help system and can also be downloaded from the **Publications** page.

## 4. Installation

### 4.1 Version 6 Installation

You must first download the latest BehavePlus 6.0 installation program from the **Software/Manuals** page onto your computer.

If you previously installed a BehavePlus6 Alpha or Beta version on your computer, you must uninstall it using Add/Remove Programs.

You do not have to uninstall BehavePlus versions 1, 2, 3, or 4 from your computer, as each version is installed in a separate directory.

Once you have downloaded the installation program, execute it by:

- clicking Start and Run, browse to locate the program, and press OK, **or**
- using My Computer or Windows Explorer ® to locate the file and double-clicking on its name or icon to execute it.

When completed, a BehavePlus6 icon should appear on your desktop; click the icon to start BehavePlus Version 6.

## 4.2 Upgrading from Versions 5

BehavePlus Version 1, 2, 3, 4, 5 and 6 may co-exist on the same computer. If you accept the default values during installation of BehavePlus Version 6, it will be installed in a location separate from previous versions. A shortcut for all versions may appear on the desktop

Version 5 data files, including Run, Worksheet, Fuel Model, Moisture Scenario, and Units Set files, can be read by Version 6. BehavePlus only looks in the directory in which it was installed (e.g., Version 6 will only look in the folders in the BehavePlus6 directory). To use previously developed worksheets, you need to copy the entire folder containing the relevant files from the Version 5 directory to the Version 6 directory using Windows Explorer ®.

## 4.3 Uninstalling

The BehavePlus6 installation program uses Wise ® installer to ensure BehavePlus6 is correctly registered with your Windows ® operating system. The only correct way to uninstall BehavePlus is via the **Add/Remove Programs** dialog:

- Click on **Start > Control Panel**.
- Click on **Add or Remove Programs**.
- Locate the BehavePlus entry in the program list, and
- click on **Change/Remove**.

**Note:** The uninstaller only removes files that were originally created by the installation program. Any files you created or saved using BehavePlus5 are not removed by the uninstaller. If you wish to remove these files, we recommend using Windows Explorer ®.

USFS computer users will need to go to **Start > All Programs > PowerBroker > PowerBroker – Uninstall or Change a Program**.

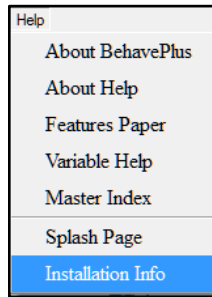
## 4.4 BehavePlus Installation Info

Information specific to the current installation of BehavePlus is included with the program.

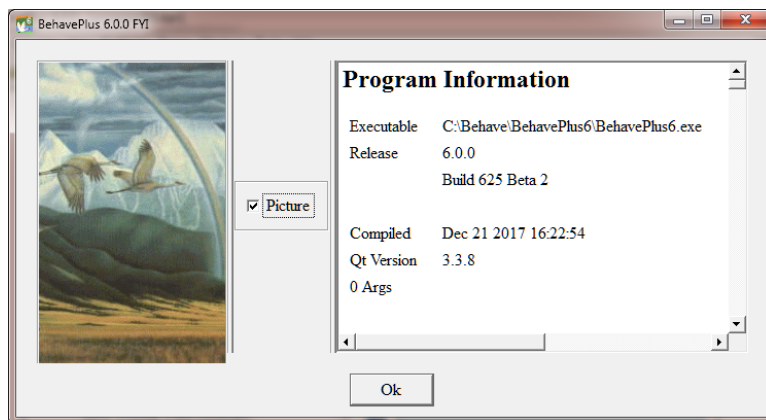
### 4.4.1 Program Information

In the Program Information section, you can view the location of the executable file, the release number, and the date and time it was compiled. This information can help you

determine if you have the latest version of the program. The BehavePlus **Program Information** can be accessed by clicking on **Help > Installation Info**.



The **FYI** window that opens contains a wealth of information about the BehavePlus setup. **Build #625** is the formal release of BehavePlus 6.0.0 Beta.



#### 4.4.2 Environment Variables

The Environment Variables section shows the current environment variable settings of the user's computer. The \$PATH environment variable, in particular, shows the order in which Microsoft Windows searches directories to find applications. This may be useful in determining exactly which BehavePlus executable file is being run.

### 5. Support

The following sources of technical support and training are available.

#### 5.1 U.S. Government National Support

The first level of technical support is provided through your local support channels.

## National Support Desk

Primary user support for BehavePlus installation and use is provided by the US Forest Service Fire and Aviation Management Help Desk via

- Phone: (866) 224-7677 or (616) 323-1667,
- Fax: (616) 323-1665, or
- E-mail: [IIA-Helpdesk@fs.fed.us](mailto:IIA-Helpdesk@fs.fed.us).
- Website: <https://ia-hd.peckham-enclave.us/>

The National Support Desk is available for help with software issues only and cannot deal with fire behavior questions.

## 5.2 Training Material

Some of the BehavePlus training material was updated and expanded as part of Joint Fire Science Program (JFSP) project 05-4-1-23. Development continues with support of Forest Service Fire and Aviation Management.

Lessons are organized according to Units:

- Overview Unit — General overview of BehavePlus
- Introduction Unit — Four required lessons that provide the foundation for program operation
- Operation Unit — Optional lessons that cover various aspects of operation
- Modeling Unit — Modeling capabilities, limitations and assumptions, sensitivity
- Application Unit — Specific application examples

There is not a single BehavePlus "course". Lessons can be used singly or in combination to meet specific needs. More information on training materials can be found by visiting the main **Tips / Training Page**. If you would like information on workshops that have been developed and are available for your use, please contact the agency staff.

## 5.3 Features Guide

The BehavePlus Features Guide covers all aspects of the program operation and is available in Adobe ® PDF format. It replaces the User's Guide.

## 5.4 Variables Paper

A Variables paper describes the many variables in BehavePlus, with information on input and output variables.

## 5.5 FAQ's

The **Frequently Asked Questions** address various aspects of BehavePlus installation and usage.