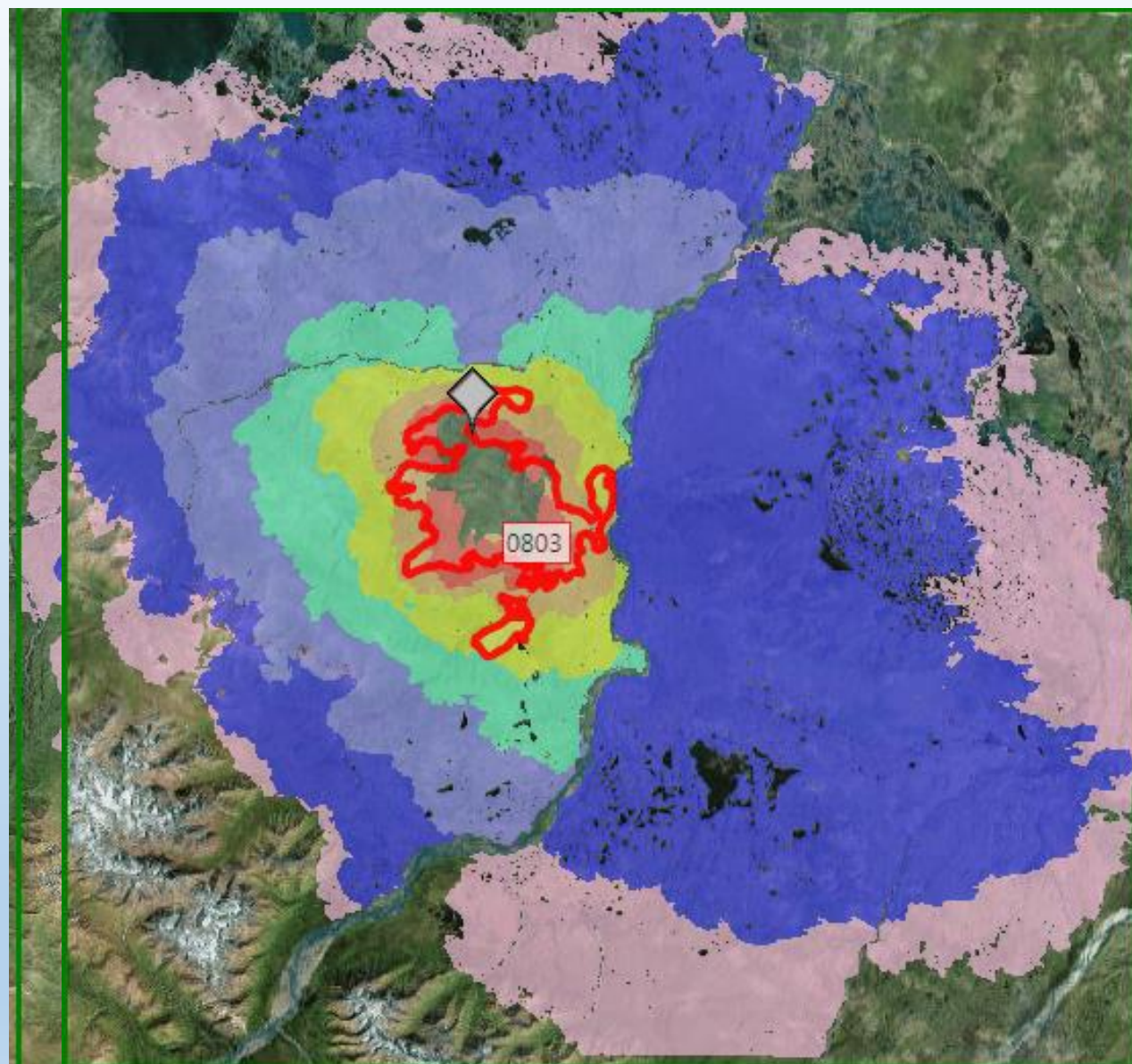


FSPro: Accuracy and Consistency

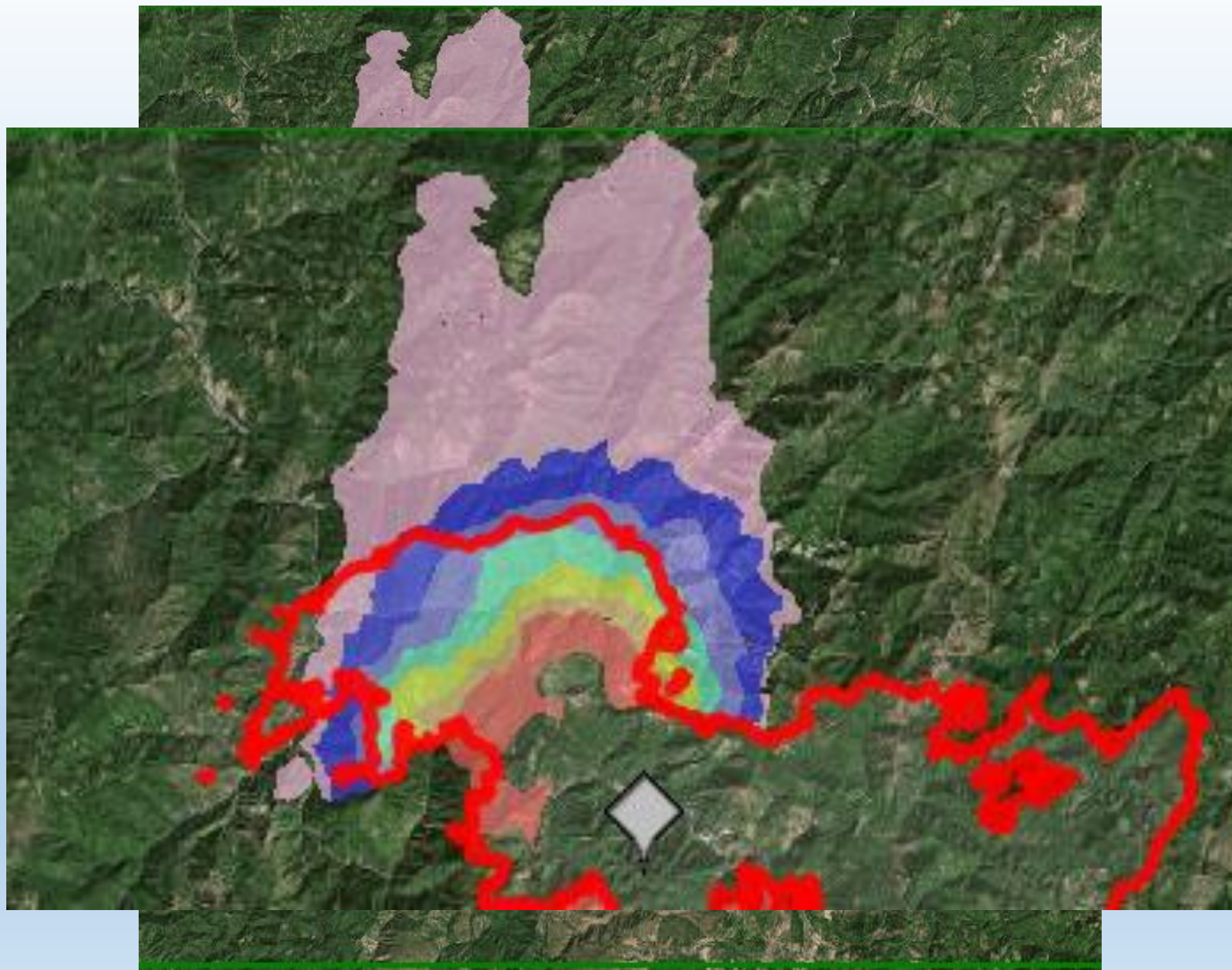
How do you know if your FSPro is accurate?

- Is there a metric to gauge accuracy of FSPro analysis?
- Calibration to short term spread.
- Verifying inputs, choosing weather stations wisely, and field verification.
- FSPro outputs are not perimeters.
- How do you know if your analysis is accurate?

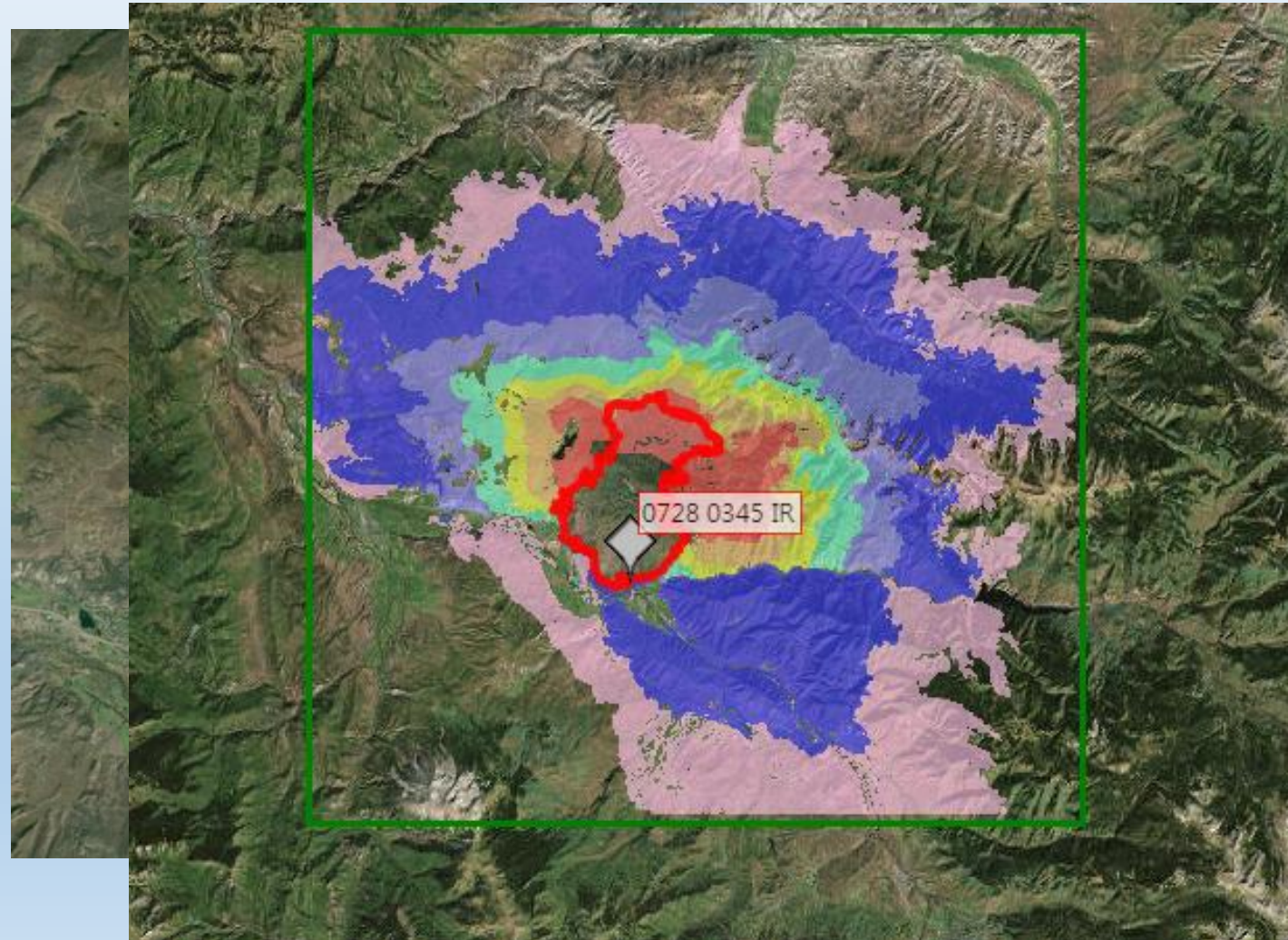


Things that add confidence to my analysis:

- Not my first run.
- Calibrated to fire spread. Accurate fire perimeters or updated MODIS or VIIRS.
- Confidence in RAWWS and forecast.
- Good feel for live fuels moisture and ERC bins.
- In person briefing vs. just notes in WFDSS.
- Still begs the question, how to you know your analysis is accurate?



Would more consistency between analysts make results more useful to managers?



There usually isn't consistency in labeling.

- ☐ 9.3.2157
- ☐ Klondike_IR
- ☐ Perimeter_02SEP_2130
- ☐ Perimeter0902AM
- ☐ IR0901
- ☐ IR08312112
- ☐ 0829 2045 IR
- ☐ 0829 0100 IR
- ☐ 0829_2045_Peri_IR
- ☐ 0827 2201 IR
- ☐ 0827_Perimeter_0024_
- ☐ 0825_Perimeter_2104_
- ☐ 0823 Klondike only
- ☐ 0821_Perimeter_1330_
- ☐ 0820_UAS
- ☐ 0802_UAS

- ☐ Sept 27 2314 IR ▼
- ☐ Sept 26 2102 IR ▼
- ☐ Sept 25 2332 IR ▼
- ☐ Sept 24 2320 IR ▼
- ☐ Sept 23 2306 IR ▼
- ☐ Sept 23 0009 IR ▼
- ☐ Sept 21 2111 IR ▼
- ☐ Sept 20 2201 IR ▼
- ☐ Sept 19 2327 IR ▼
- ☐ Sept 18 2253 IR ▼
- ☐ Sept 17 2006 IR ▼
- ☐ Sept 16 0315 IR ▼
- ☐ Sept 15 0300 IR ▼
- ☐ Sept 14 0345 IR ▼
- ☐ Sept 13 0215 IR ▼

Analyst Bias

- We all have it. Our experiences, training and beliefs that effect how we view analysis.
- Should we be modeling:
 - Average growth for current conditions?
 - Higher than average growth?
 - Potential, worst case scenario?
- In theory shouldn't calibration smooth out of analyst bias?

Consistency in labeling results

- There is the obvious status accept/reject/review for analysis.
- Should you amend the title of accepted or analysis left in review status that used incorrect assumptions? “Do Not Use”.
- Separate technical notes for other analysts from the analysis results notes that are emailed to incident owners?

From the Packer Cabin FLA

Lessons Learned:

- We put a lot of faith in models, but the models were out-paced on the days when the fire was really growing. The models are calibrated based on past experience, which may not be the best predictor in today's conditions.
- Don't trust the models.
- We're so model-dependent we may lose local knowledge and common sense.