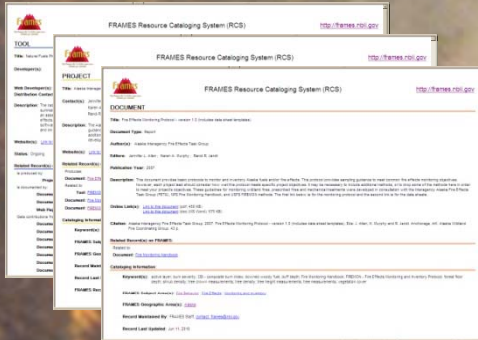
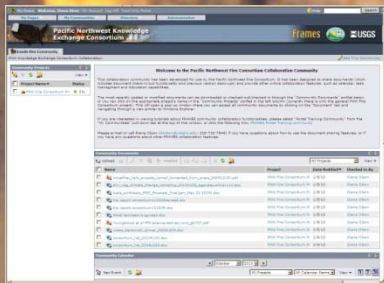


# Resource Catalog



The **FRAMES Resource Cataloging System (RCS)** is a searchable repository of projects, tools, documents, data, web pages and programs. Information stored in the RCS is accessible through the “Search” box on FRAMES (upper right corner of the window) and through the “Browse” portlets on most pages (left column, below the banner).

# Collaboration Services



**FRAMES Online Collaboration:** FRAMES users from any agency or organization can log on to MyFRAMES to access online project collaboration technology.

Collaboration services include:

- document sharing
- calendars
- announcements
- discussions
- tasks
- notifications and subscriptions

For more information, please contact:

**Diana Olson**  
**FRAMES Project Manager**  
**dlolson@uidaho.edu**  
**206-732-7844**

Revised 10/22/2010

Northwest Fire Portal Partners Include:



# Northwest Fire Portal

<http://frames.nbii.gov/northwest>



# Fire Research and Management Exchange System (FRAMES)

<http://frames.nbii.gov>

The goal of **FRAMES** is to provide a systematic method of exchanging information and transferring technology between wildland fire researchers, managers, and other stakeholders in order to make projects, tools, documents, data, and other information resources easy to find, access, distribute, compare, and use. Publicly accessible content on FRAMES is organized into three main areas:

- Subject Areas
- Geographic Areas
- Partner Sites

**Subject Areas:** Find resources (i.e., data, documents, tools, projects, programs and web pages) organized by subject.



**Geographic Areas:** Find regionally significant information resources and tools that correspond to the U.S. Geographic Area Coordinating Centers (GACCs).



**Partner Sites:** Visit sites that are operated and maintained by partner projects and organizations in order to share pertinent data, publications, and other materials.



# Northwest Fire Portal



The **Northwest Fire Portal** provides information about fire science and technology relevant to the northwestern contiguous United States. The goal is to provide "one-stop shopping" for resource managers, decision makers, scientists, students, and communities who want access to the results of efforts to understand and manage fire and fuels on lands in the Northwest. Much of the content within this portal is also relevant to the temperate forests of southwestern Canada.

Through the Northwest Fire Portal you can access the **Pacific Northwest Knowledge Exchange Consortium**:

<http://frames.nbii.gov/northwest/consortium>

Visit the Northwest Fire Portal at:  
<http://frames.nbii.gov/northwest>

