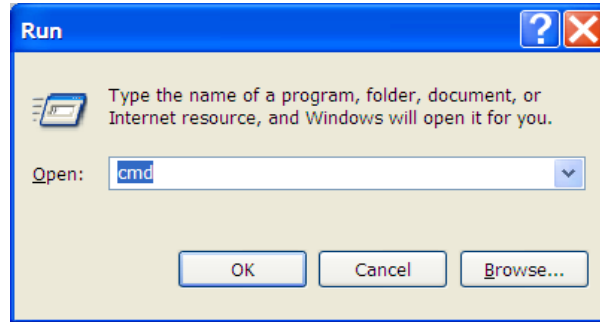


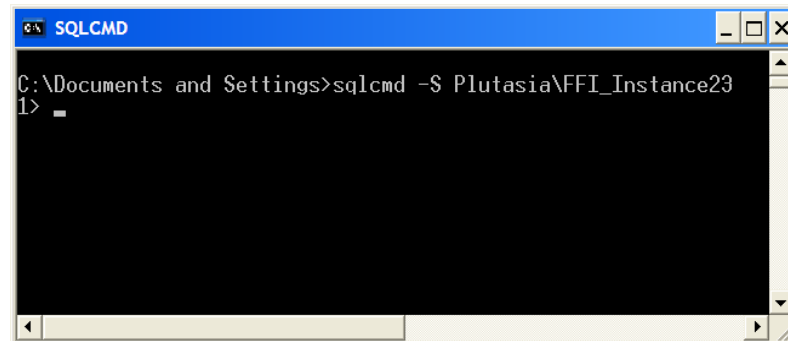
How to Reset Your SQL Password

To reset your SQL password you will need to have administrative privileges. Follow the steps below:

- 1) Login in to the machine hosting the SQL database (Must have admin privileges)
- 2) Open a the run command by clicking **Start > Run**
- 3) In the Open field type **cmd**, then click **OK**

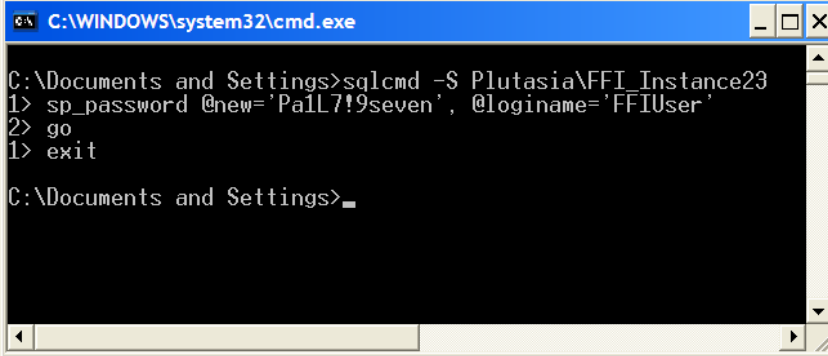


- 4) Type the command: **sqlcmd -S SQLSERVER\SQLEXPRESS** where SQLSERVER is replace with the name of your database server and SQLEXPRESS is replaced with the name of your instance. Then press Enter.



- 5) Type the command: **sp_password @new = 'newpassword', @loginame = 'username'** replacing the *newpassword* with the new password you want to use, and the *username* with your user login name. Press Enter.
- 6) Type **Go**, then press Enter

- 7) Type **Exit**, then press Enter



```
C:\WINDOWS\system32\cmd.exe
C:\Documents and Settings>sqlcmd -S Plutasia\FFI_Instance23
1> sp_password @new='Pa1L7!9seven', @loginame='FFIUser'
2> go
1> exit
C:\Documents and Settings>_
```

- 8) If FFI is open, close it. Open FFI and log in by typing your username in the *User Name* field and your SQL password in the *Password* field. You are now ready to use FFI.